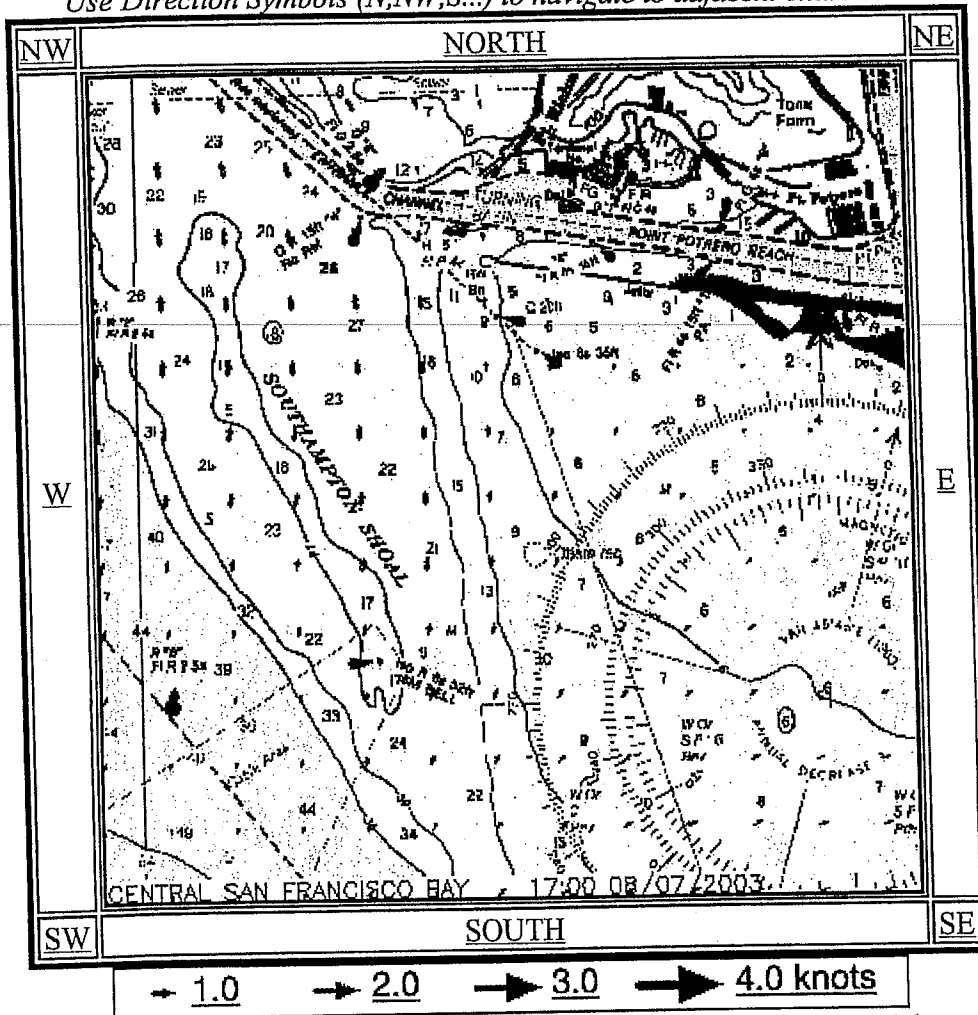


### San Francisco Bay Currents at - 22:00 12/08/2002

[Click here to print this chart.](#)

Use Direction Symbols (N,NW,S...) to navigate to adjacent chart tiles



Current velocities are computed hourly for each cell of the TRIM model. The model resolution is 200 meters. Alternating vectors are plotted here, registered to NOAA charts.



<a href="#">South San Francisco Bay</a>	<a href="#">Central Bay</a>	<a href="#">San Pablo Bay</a>	<a href="#">Suisun Bay</a>
---	-----------------------------	-------------------------------	----------------------------

[TOP PAGE](#) [GLOSSARY](#) [FEEDBACK](#)

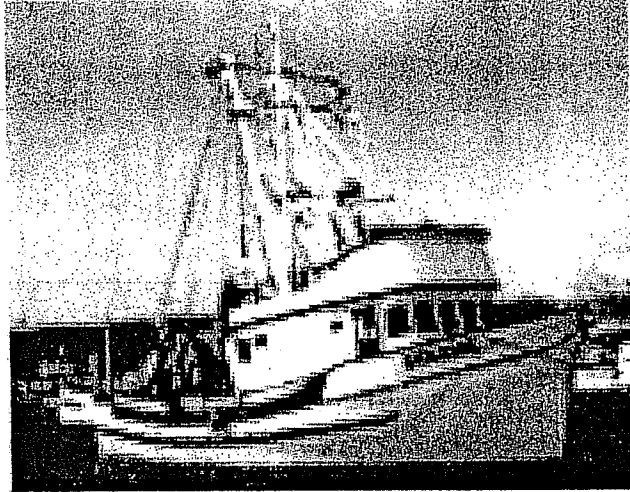
[USGS Privacy/Copyright Statement and FOIA info](#)

**DEFT/RESP**  
 EXH. NO. DSL-1  
 CASE NO. 655508A  
 ADM 10/29/04

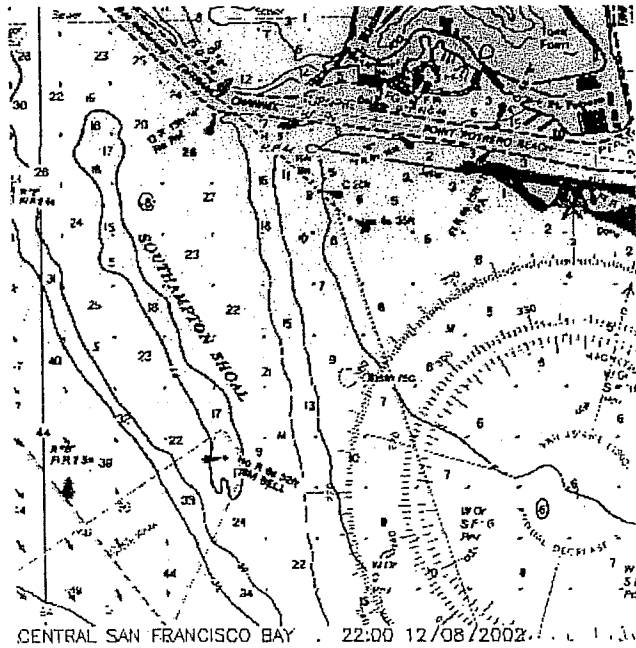
034256

4289

2-142591



boatcom[1].jpg  
150x116x24b jpeg



cb16\_16[1].gif  
426x426x256 gif

**DEFT/RESP**  
EXH. NO. DSL-2  
CASE NO. SC5557A  
Adm 10/29/04

4299

4276  
2-142591

				Physical Location
boatrec[1].jpg	12/08/02	12/08/02 09:55:14PM	12/08/02 09:55:12PM	
PS:3510145, SO:0: LE:0				
ca_map[1].gif	12/08/02	12/08/02 09:57:34PM	12/08/02 09:57:30PM	
PS:3512369, SO:0: LE:0				
mapimage[1].gif	12/08/02	12/08/02 10:20:22PM	12/08/02 10:20:16PM	
PS:3434945, SO:0: LE:0				
western[1].gif	12/08/02	12/08/02 10:06:12PM	12/08/02 10:06:08PM	
PS:3511537, SO:0: LE:0				
CB[1].gif	12/08/02	12/08/02 09:53:06PM	12/08/02 09:52:54PM	
PS:3517601, SO:0: LE:0				
find_great_fares_468x60[1].gif	12/08/02	12/08/02 10:00:54PM	12/08/02	
10:00:52PM PS:3533137, SO:0: LE:0				
M-NA-B706[1].gif	12/08/02	12/08/02 10:00:12PM	12/08/02 10:00:10PM	
PS:3531601, SO:0: LE:0				
mssc031[1].gif	12/08/02	12/08/02 09:59:36PM	12/08/02 09:59:34PM	
PS:3527601, SO:0: LE:0				
sportfishregs_cover[1].jpg	12/08/02	12/08/02 10:03:20PM	12/08/02	
10:03:18PM PS:3508337, SO:0: LE:0				
sportfishregs_map2[1].jpg	12/08/02	12/08/02 10:04:32PM	12/08/02	
10:04:16PM PS:3509409, SO:0: LE:0				
cb16_16[1].gif	12/08/02	12/08/02 09:54:00PM	12/08/02 09:53:54PM	
PS:3518065, SO:0: LE:0				
mssc072s[1].jpg	12/08/02	12/08/02 09:59:48PM	12/08/02 09:59:46PM	
PS:3529265, SO:0: LE:0				
fmap[1].jpg	12/08/02	12/08/02 08:18:06AM	12/08/02 08:17:28AM	
PS:3468193, SO:0: LE:0				
marinamap[1].gif	12/08/02	12/08/02 08:17:44AM	12/08/02 08:17:32AM	
PS:3468961, SO:0: LE:0				
NMS_home_Logo[1].jpg	12/08/02	12/08/02 08:03:54AM	12/08/02 08:03:52AM	
PS:3306577, SO:0: LE:0				
boatcom[1].jpg	12/08/02	12/08/02 09:55:12PM	12/08/02 09:55:10PM	
PS:3510113, SO:0: LE:0				
BANNERCapthook[1].jpg	12/08/02	12/08/02 08:19:18AM	12/08/02 08:19:16AM	
PS:3471345, SO:0: LE:0				
mikecrab[1].gif	12/08/02	12/08/02 08:17:36AM	12/08/02 08:17:28AM	
PS:3467921, SO:0: LE:0				
sanctlogo[1].gif	12/08/02	12/08/02 08:04:04AM	12/08/02 08:04:02AM	
PS:3306881, SO:0: LE:0				
striperKIM[1].jpg	12/08/02	12/08/02 08:19:20AM	12/08/02 08:19:18AM	
PS:3471377, SO:0: LE:0				
SuisunBay[1].gif	12/08/02	12/08/02 08:23:12AM	12/08/02 08:23:06AM	
PS:2969249, SO:0: LE:0				
mapimage[1].gif	10/31/02	09/11/02 08:14:38AM	09/11/02 08:14:10AM	
PS:6506179, SO:0: LE:0				
mqmapgen_v4[7].gif	10/31/02	04/09/01 08:42:34AM	04/09/01 08:42:32AM	
PS:1470843, SO:0: LE:0				
mqmapgen_v4[8].gif	10/31/02	04/09/01 08:47:56AM	04/09/01 08:47:52AM	
PS:51099, SO:0: LE:0				
Seattle,Spokaneand_br_surroundingareas_br_[1].txt	10/31/02	10/09/01		
10:32:30AM 10/09/01 10:32:08AM PS:777971, SO:0: LE:0				
CATZ5XUG.gif	10/10/02	10/10/01 08:19:24AM	10/10/01 08:19:14AM	
PS:2879563, SO:0: LE:0				
mqmapgen_v4[10].gif	10/10/02	03/27/01 11:09:36AM	03/27/01 11:09:32AM	
PS:1424899, SO:0: LE:0				
mqmapgen_v4[11].gif	10/10/02	03/27/01 11:11:08AM	03/27/01 11:11:06AM	
PS:1976099, SO:0: LE:0				

DEFT/RESP  
EXH. NO. D5L-3  
CASE NO. SC53370A  
Adm 10/29/04

4286