

DEFENDANT'S  
EXHIBIT NO.

D8K

SC55500A

PEOPLE v. SCOTT PETERSON

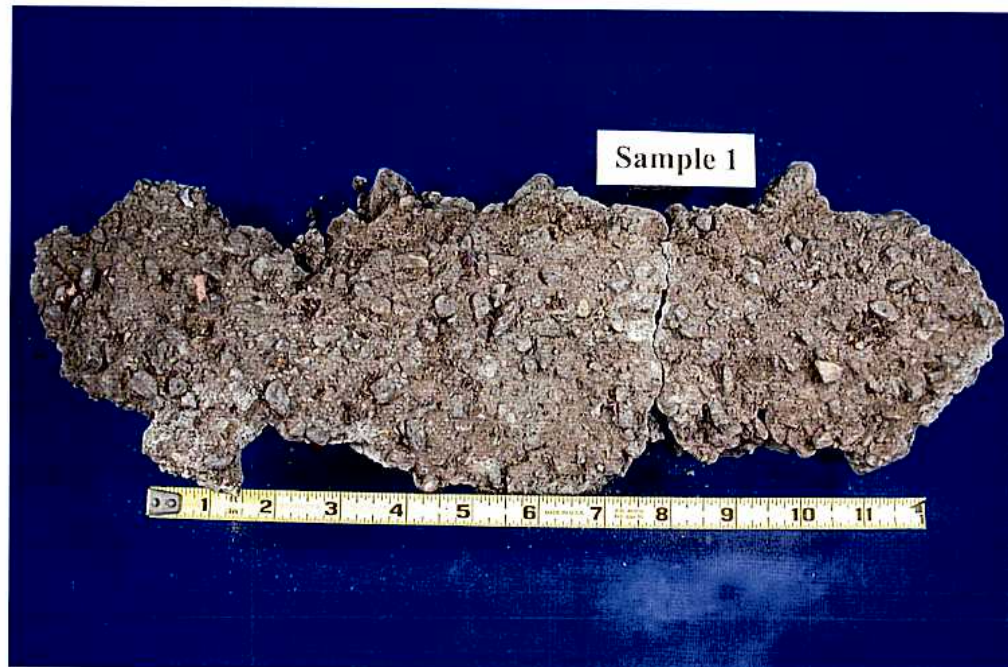
DATE OCT 18 2004

By MARYLIN MORTON  
Deputy Clerk of the Superior Court

ID ☒

ADMITTED ☒

10/29/04



**Fig. 1** Top surface of Sample 1, as received.



**Fig. 2** Bottom surface of Sample 1, as received.



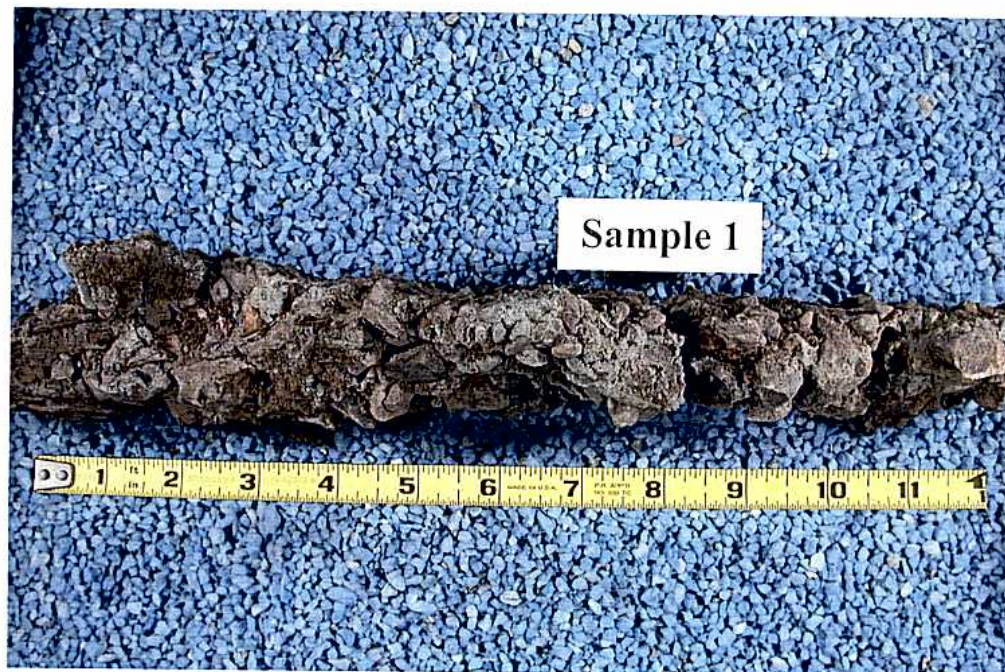


Fig. 3 Side view of Sample 1, as received.

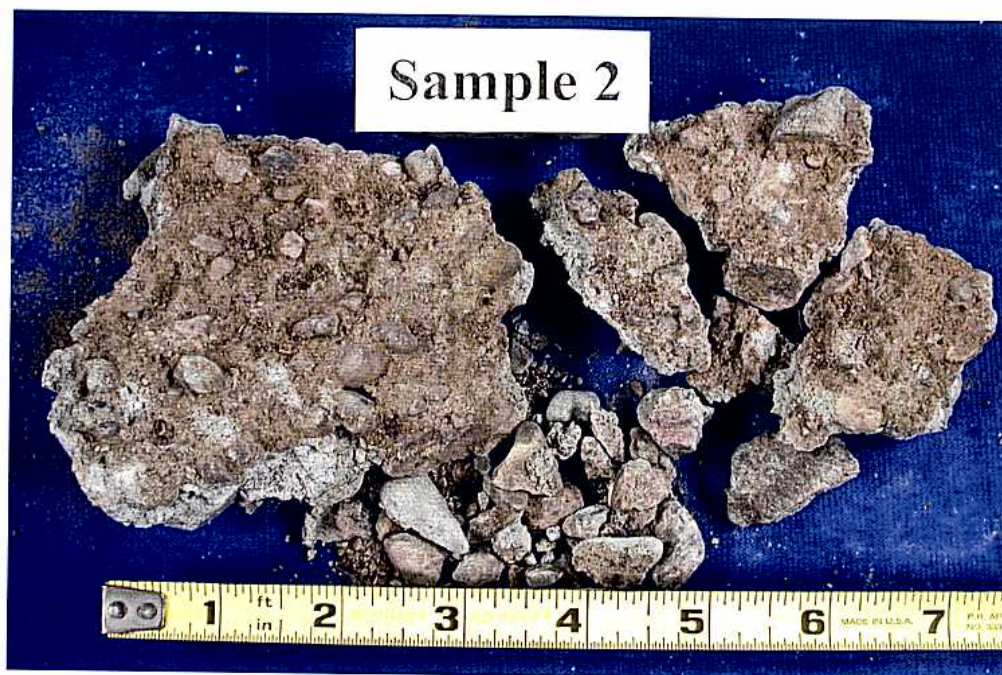


Fig. 4 Top surface of Sample 2, as received.



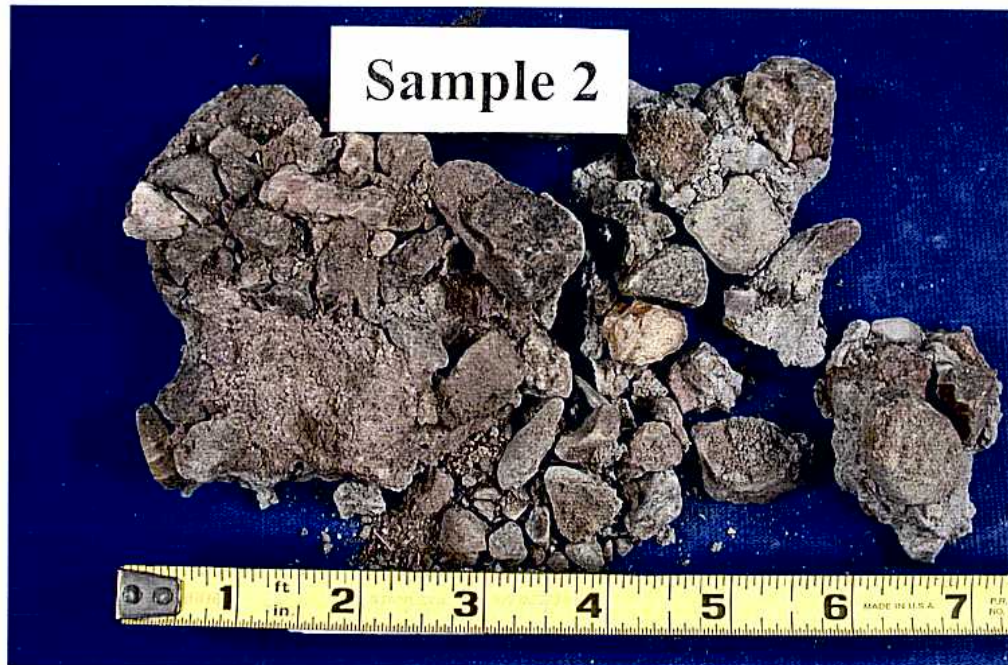


Fig. 5 Bottom surface of Sample 2, as received.

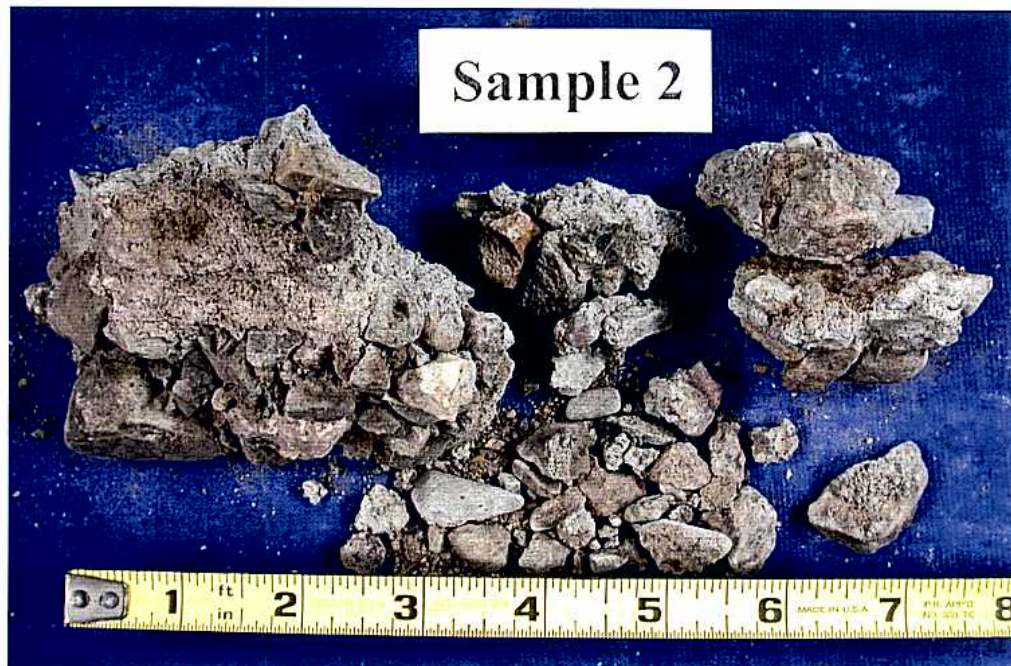


Fig. 6 Side view of Sample 2, as received.



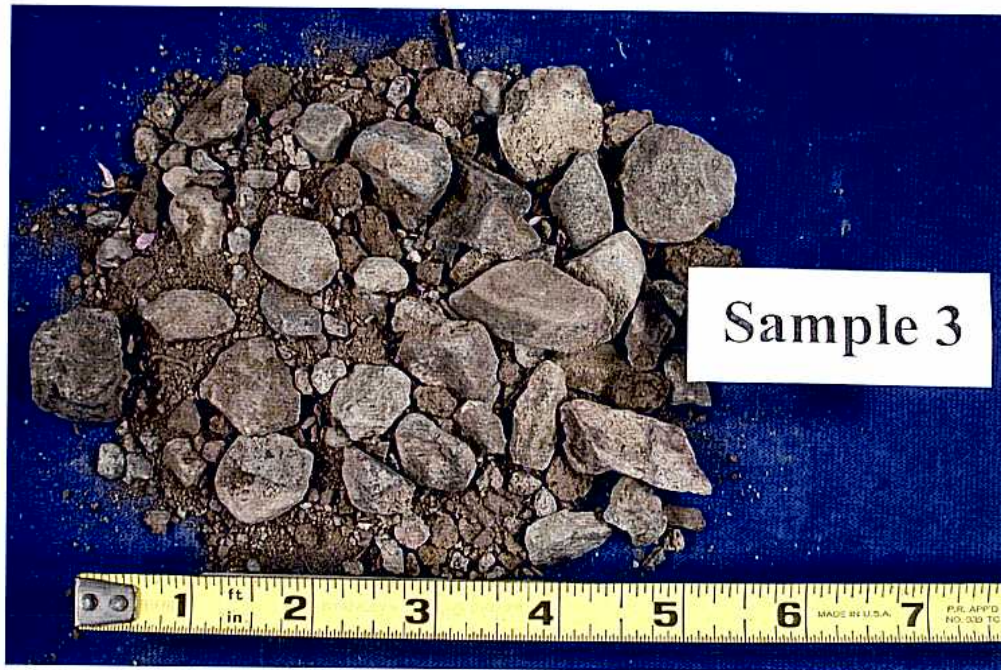


Fig. 7 Sample 3, as received.

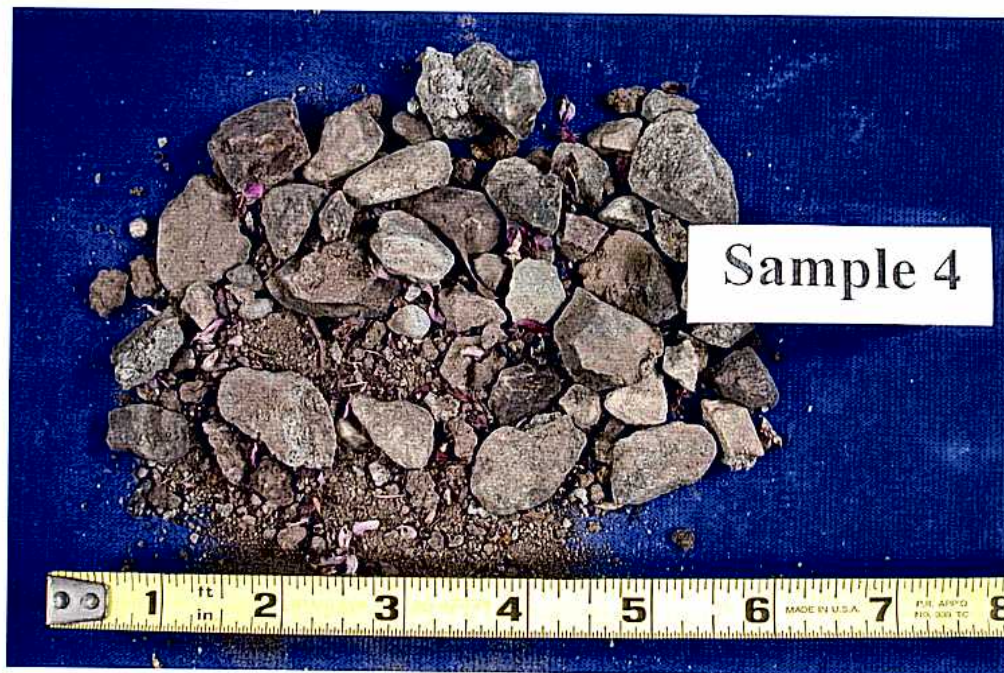


Fig. 8 Sample 4, as received.



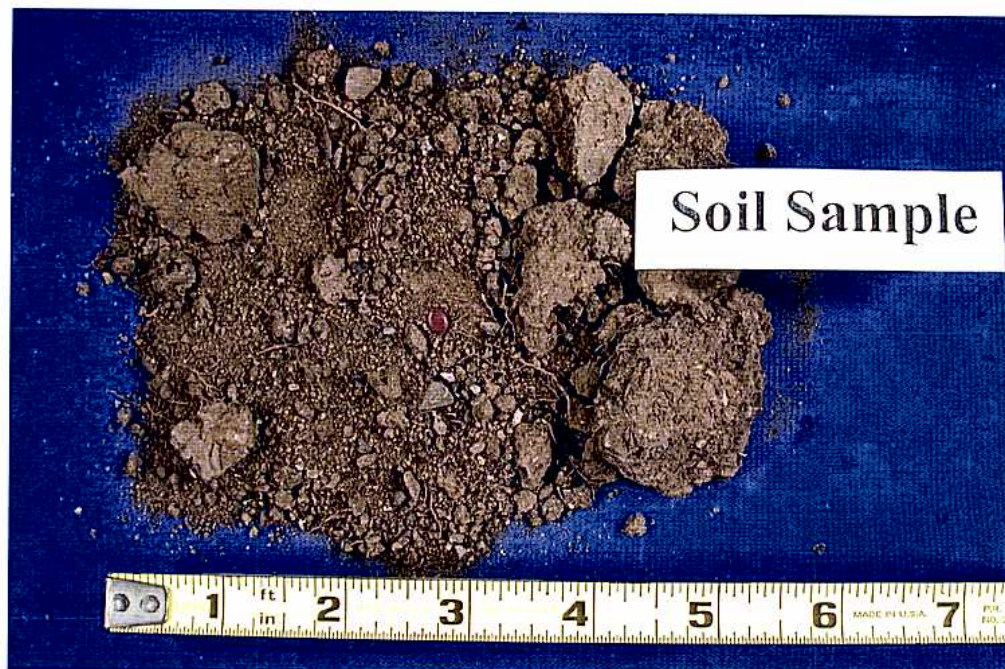


Fig. 9 Soil sample, as received.

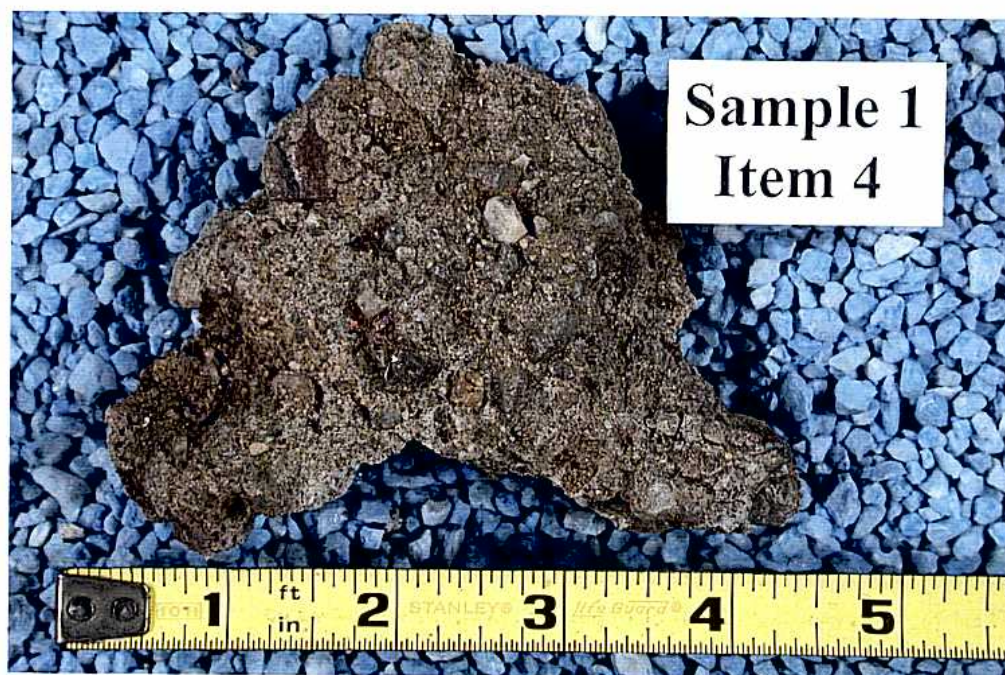


Fig. 10 Top surface of Sample 1 Item 4, as received.





Fig. 11 Bottom surface of Sample 1 Item 4, as received.

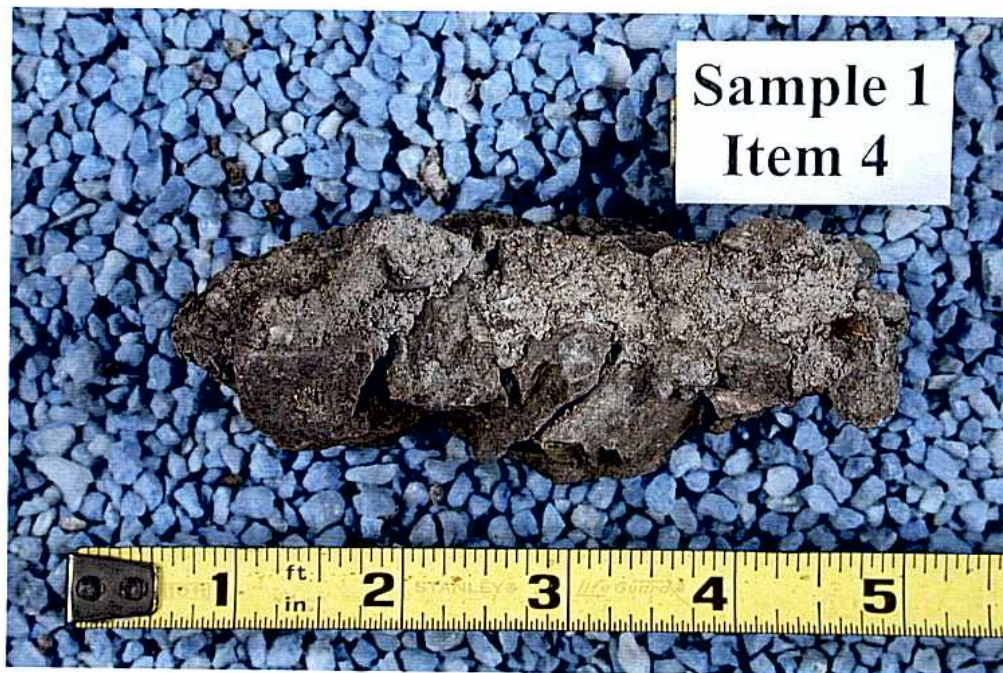


Fig. 12 Side view of Sample 1 Item 4, as received.



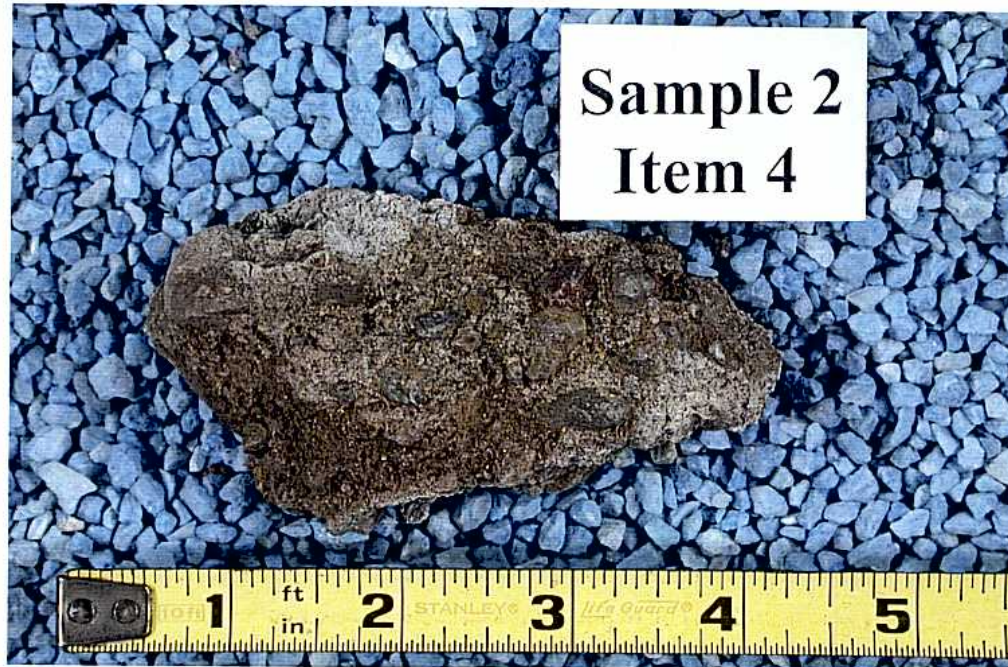


Fig. 13 Top surface of Sample 2 Item 4, as received.

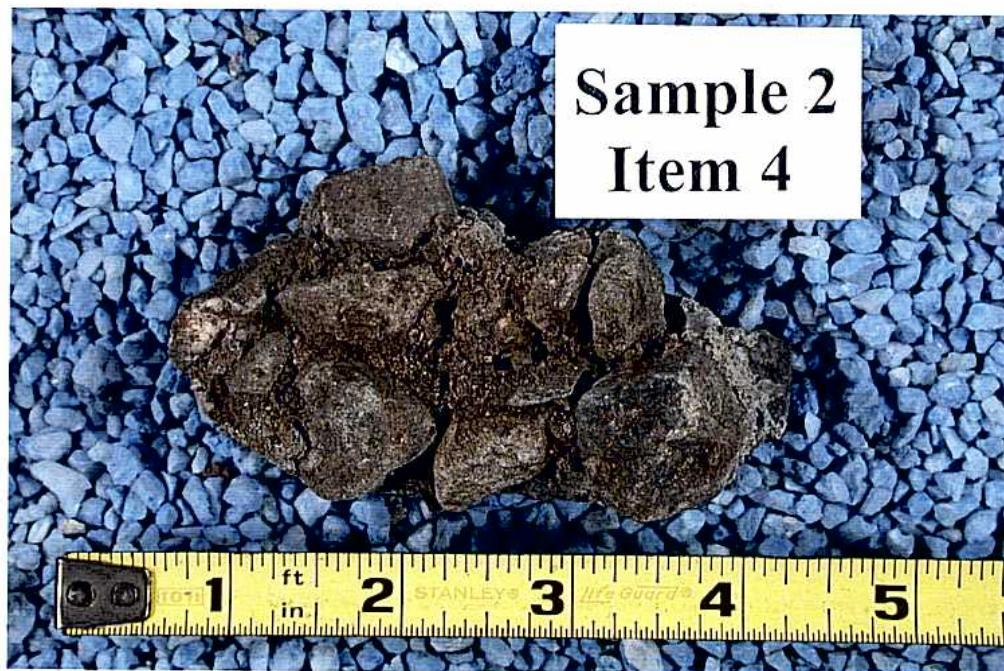


Fig. 14 Bottom surface of Sample 2 Item 4, as received.



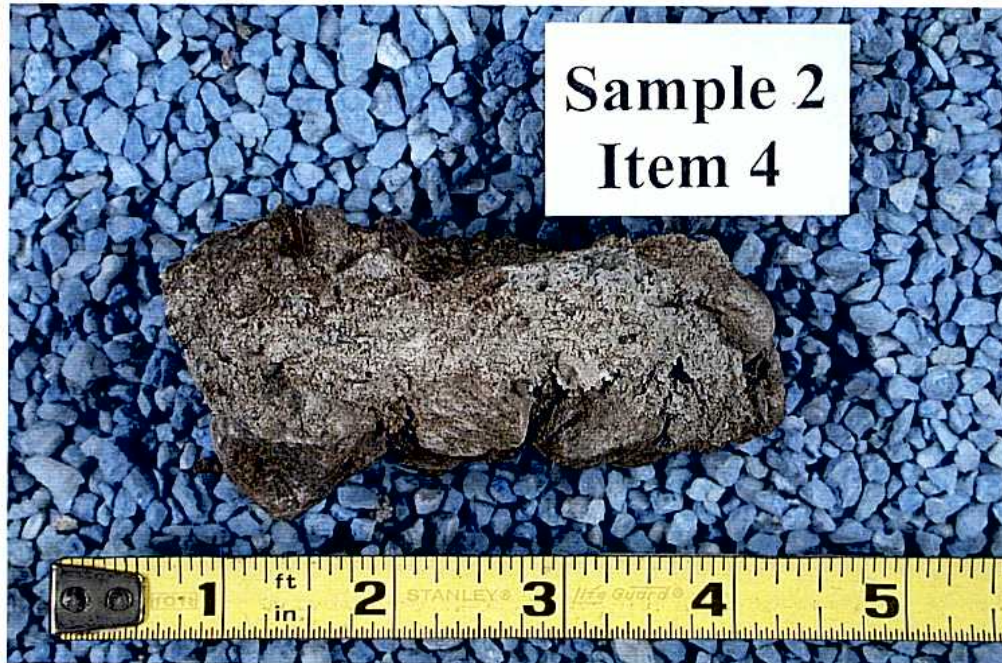


Fig. 15 Side view of Sample 2 Item 4, as received.

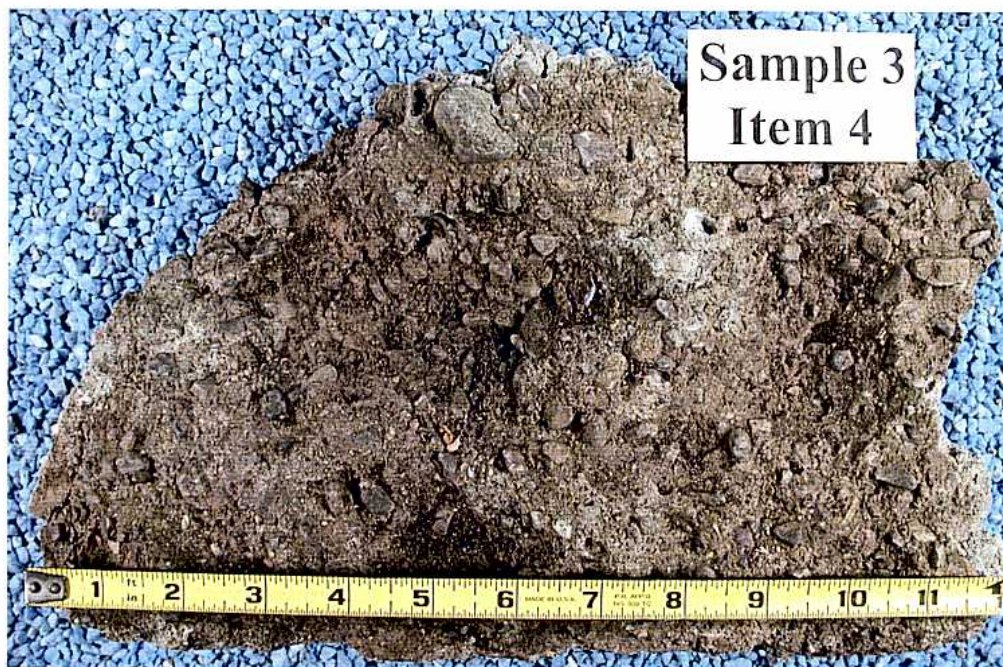


Fig. 16 Top surface of Sample 3 Item 4, as received.



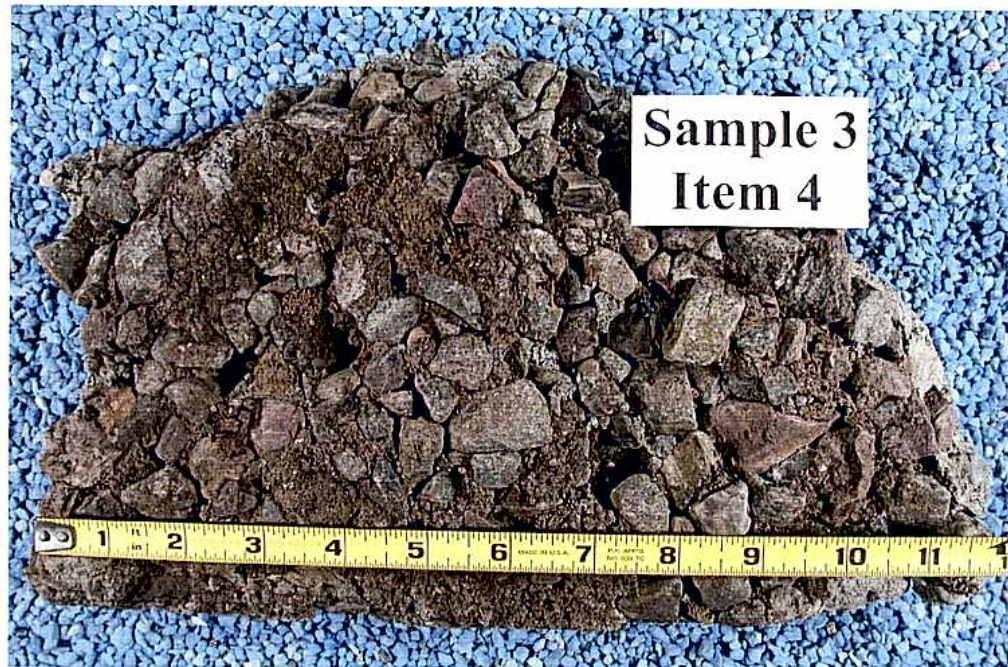


Fig. 17 Bottom surface of Sample 3 Item 4, as received.



Fig. 18 Side view of Sample 3 Item 4, as received.



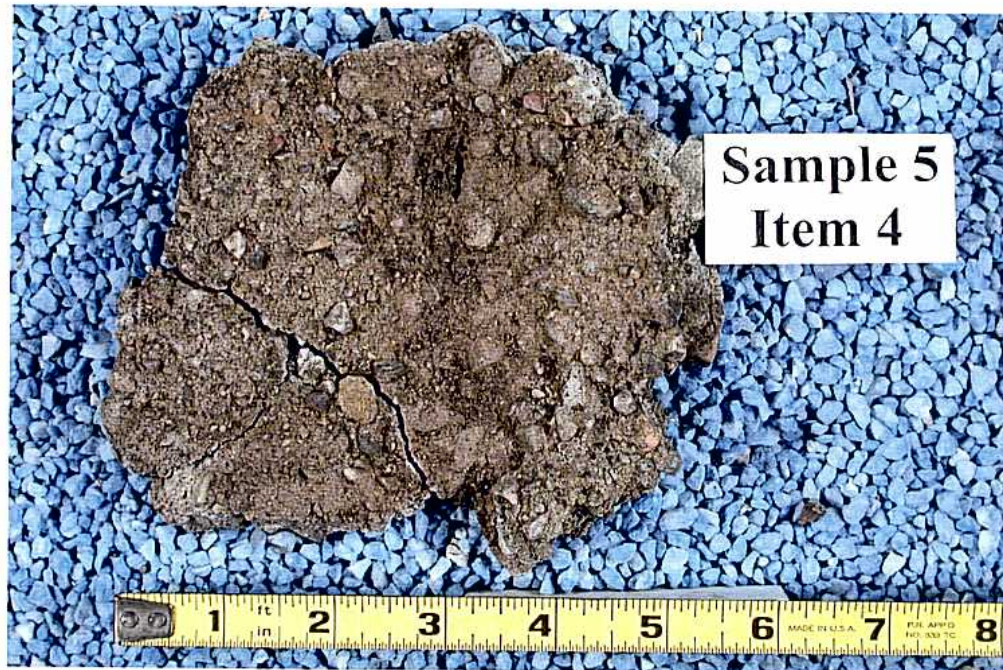


Fig. 19 Top surface of Sample 5 Item 4, as received.

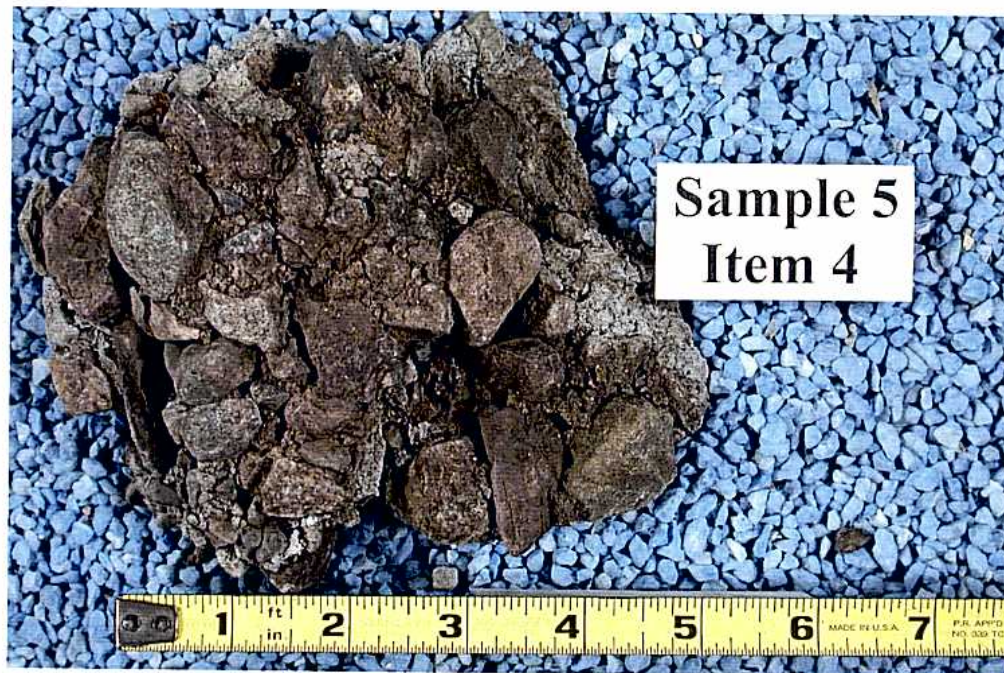


Fig. 20 Bottom surface of Sample 5 Item 4, as received.



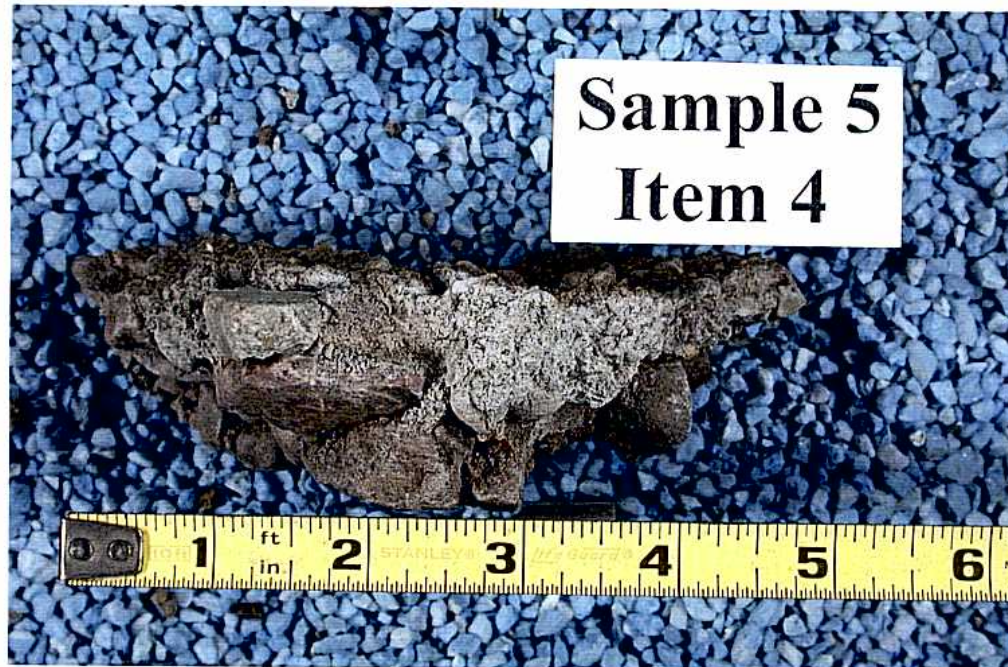


Fig. 21 Side view of Sample 5 Item 4, as received.

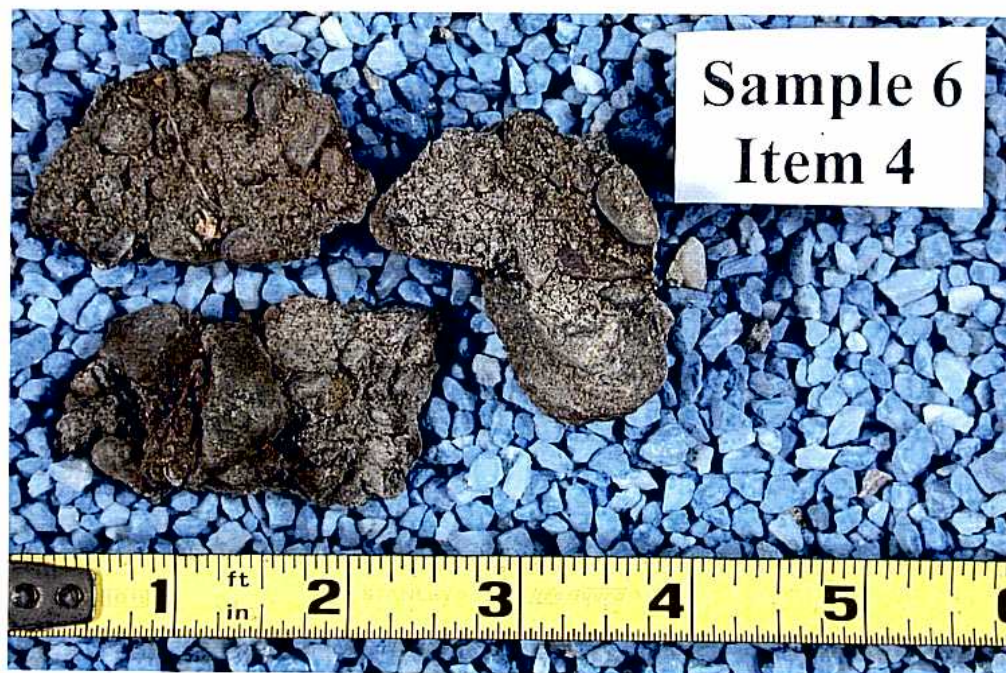


Fig. 22 Representative views of top surface, bottom surface and side view of Sample 6 Item 4, as received.



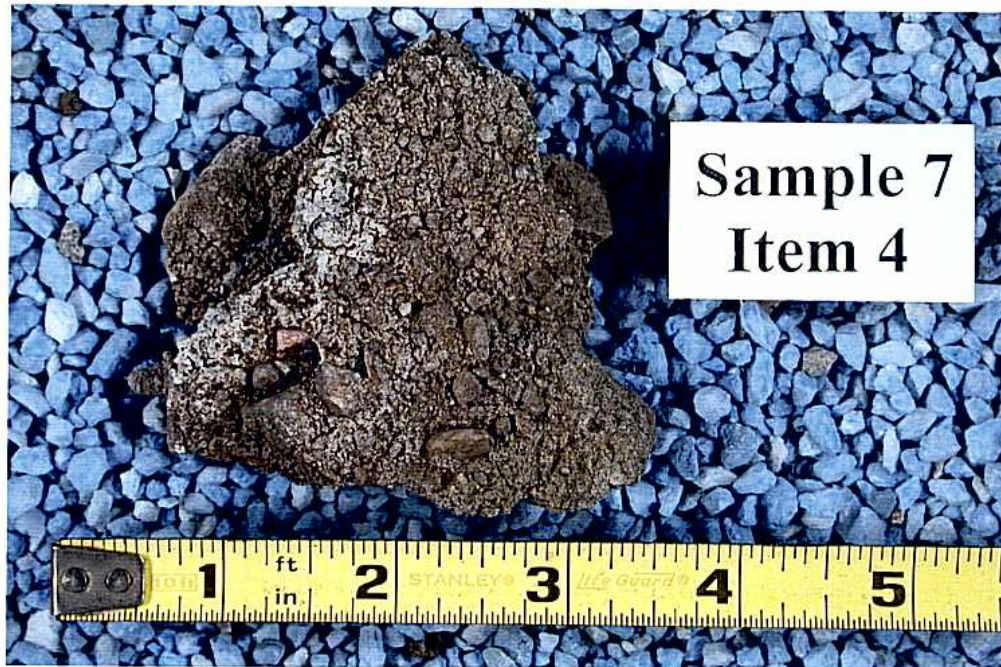


Fig. 23 Top surface of Sample 7 Item 4, as received.

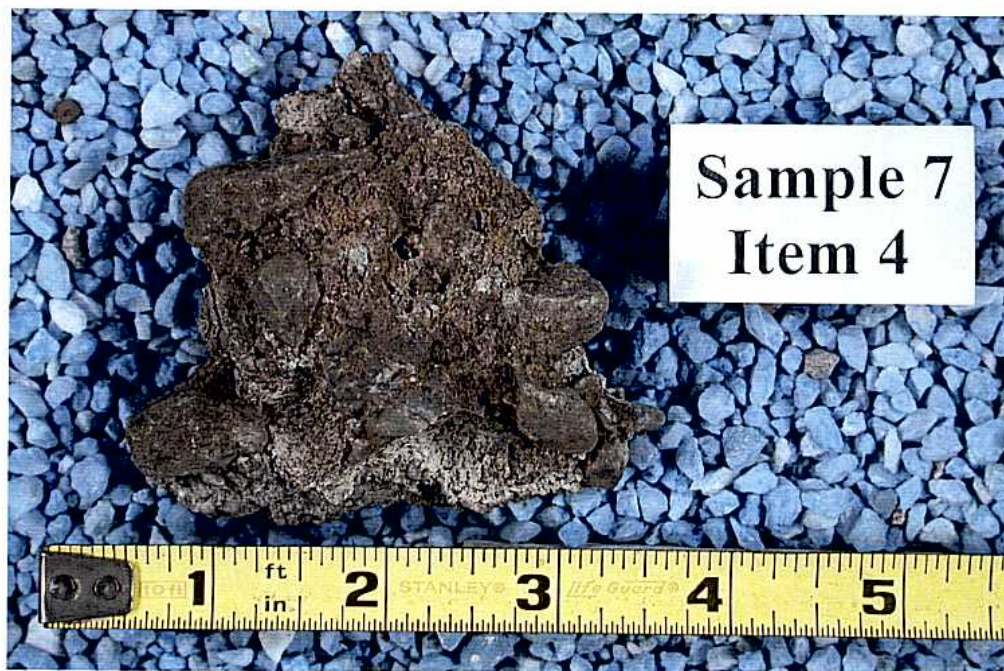


Fig. 24 Bottom surface of Sample 7 Item 4, as received.



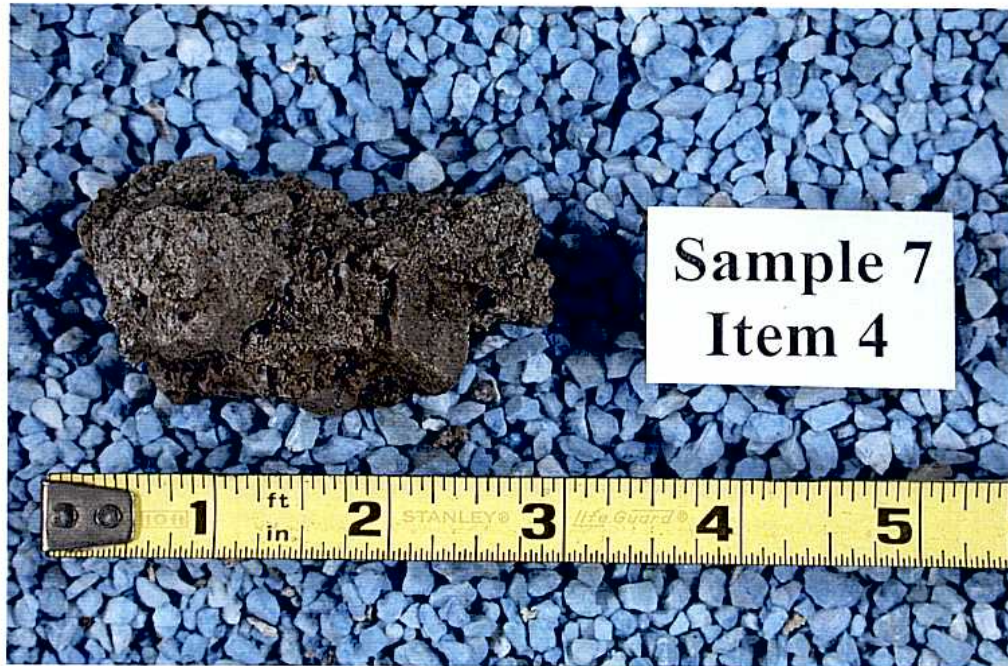


Fig. 25 Side view of Sample 7 Item 4, as received.



Fig. 26 Top surface of Sample 8 Item 4, as received.



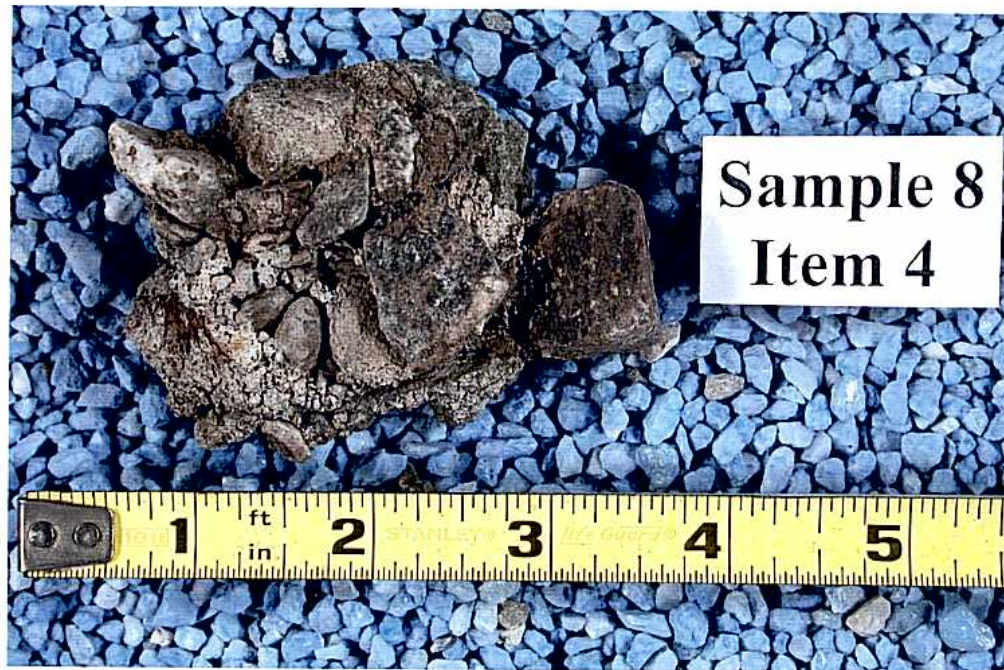


Fig. 27 Bottom surface of Sample 8 Item 4, as received.

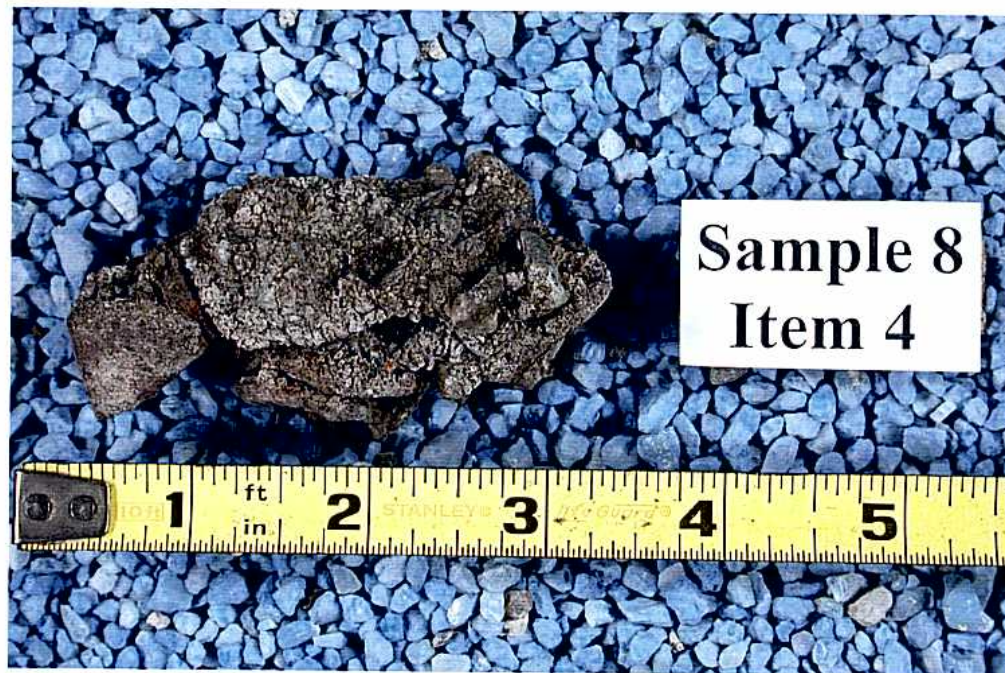


Fig. 28 Side view of Sample 8 Item 4, as received.



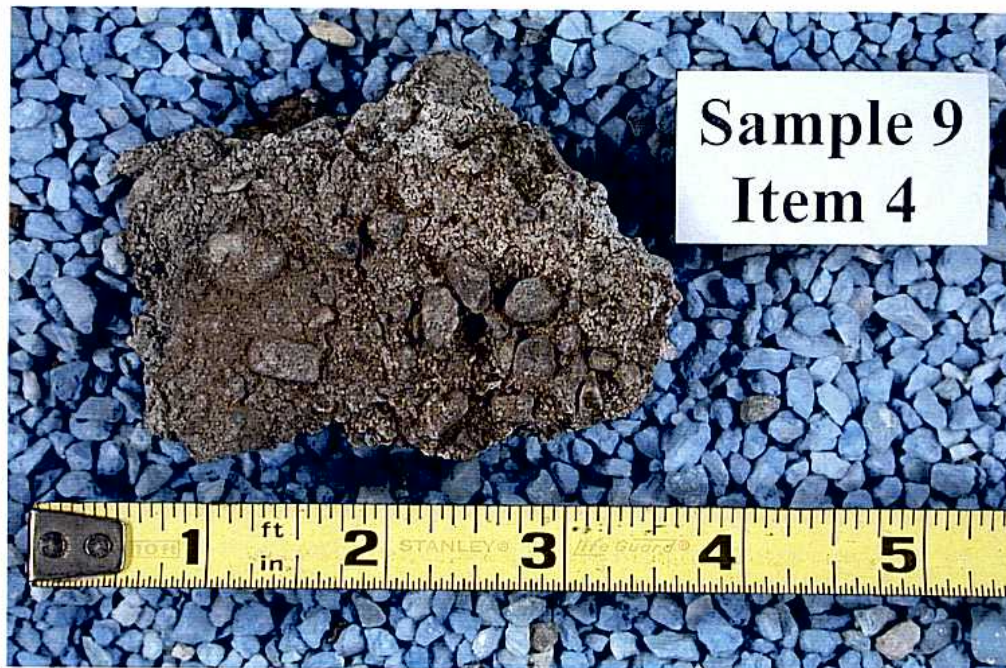


Fig. 29 Top surface of Sample 9 Item 4, as received.



Fig. 30 Bottom surface of Sample 9 Item 4, as received.



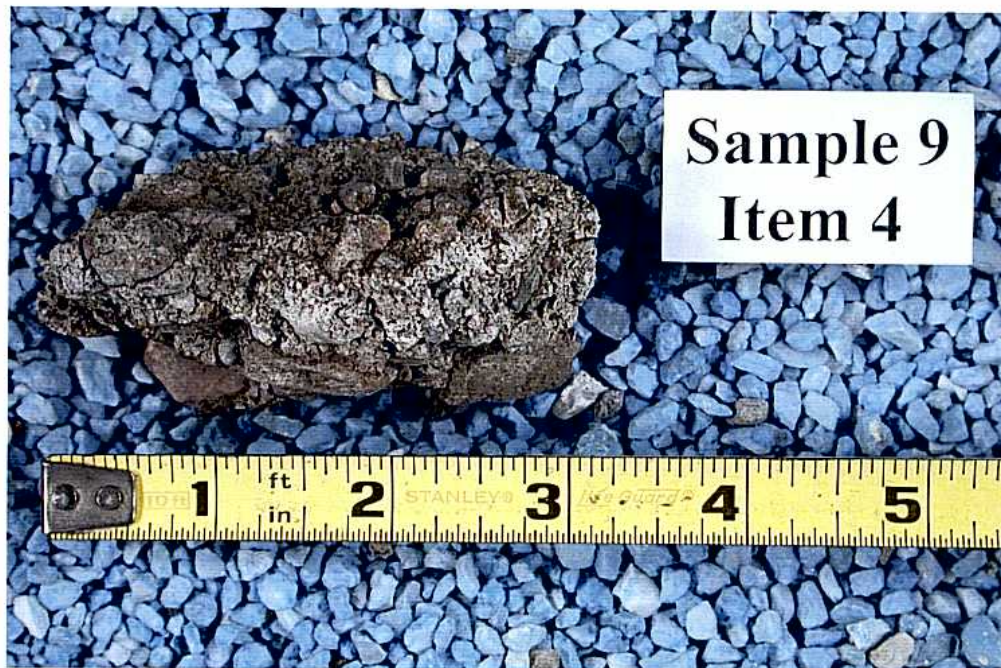


Fig. 31 Side view of Sample 9 Item 4, as received.

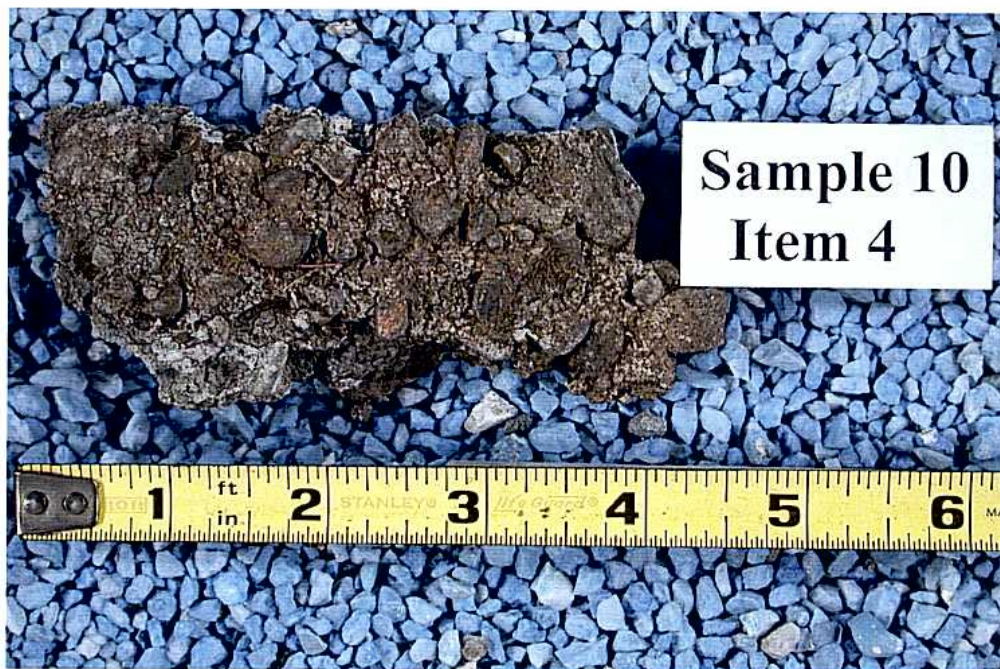


Fig. 32 Top surface of Sample 10 Item 4, as received.



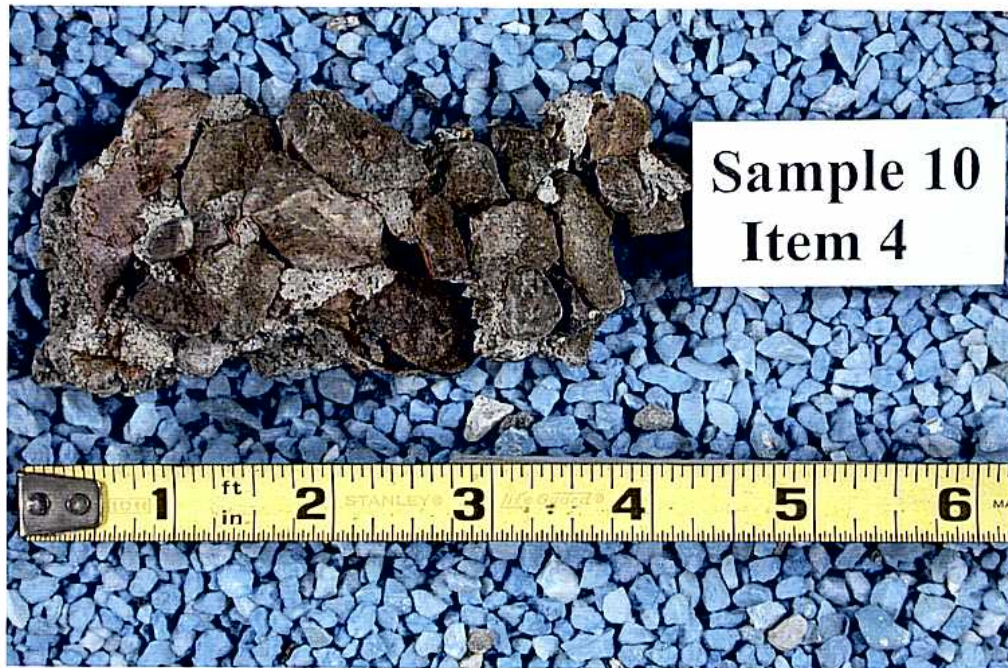


Fig. 33 Bottom surface of Sample 10 Item 4, as received.

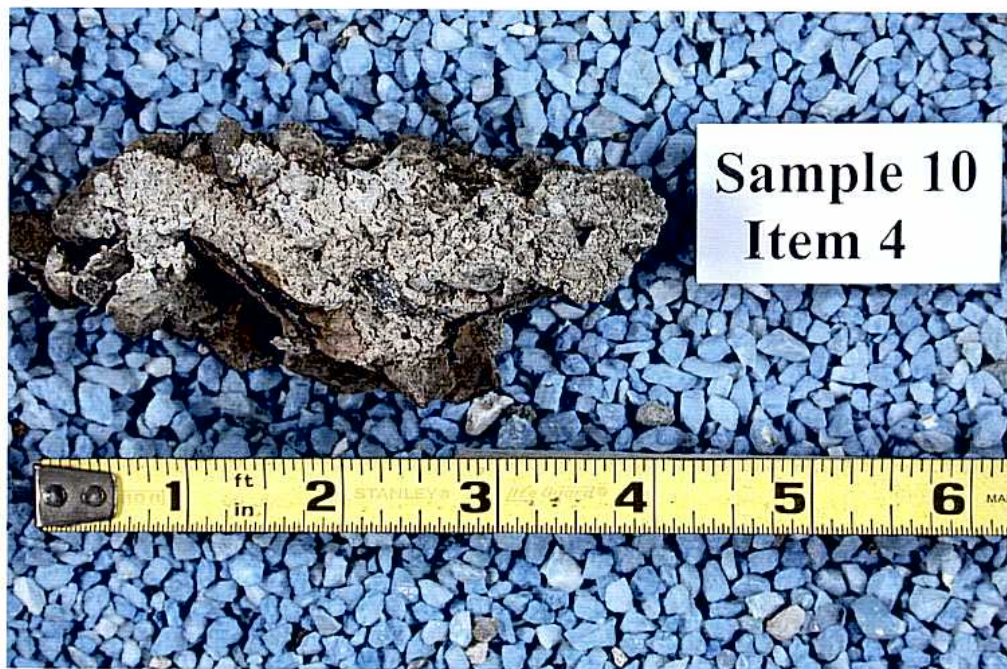


Fig. 34 Side view of Sample 10 Item 4, as received.



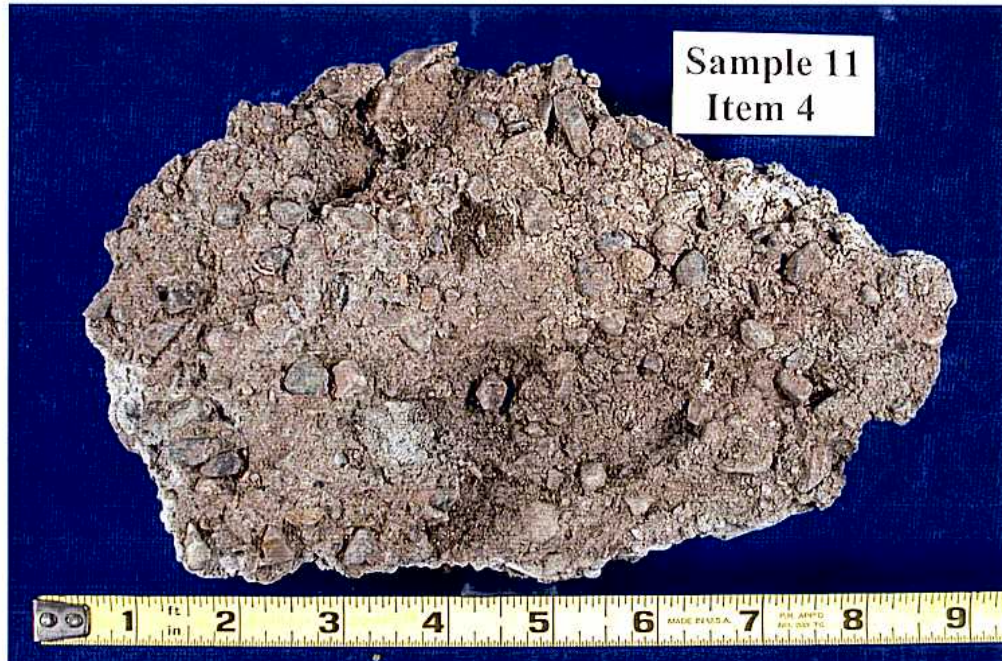


Fig. 35 Top surface of Sample 11 Item 4, as received.

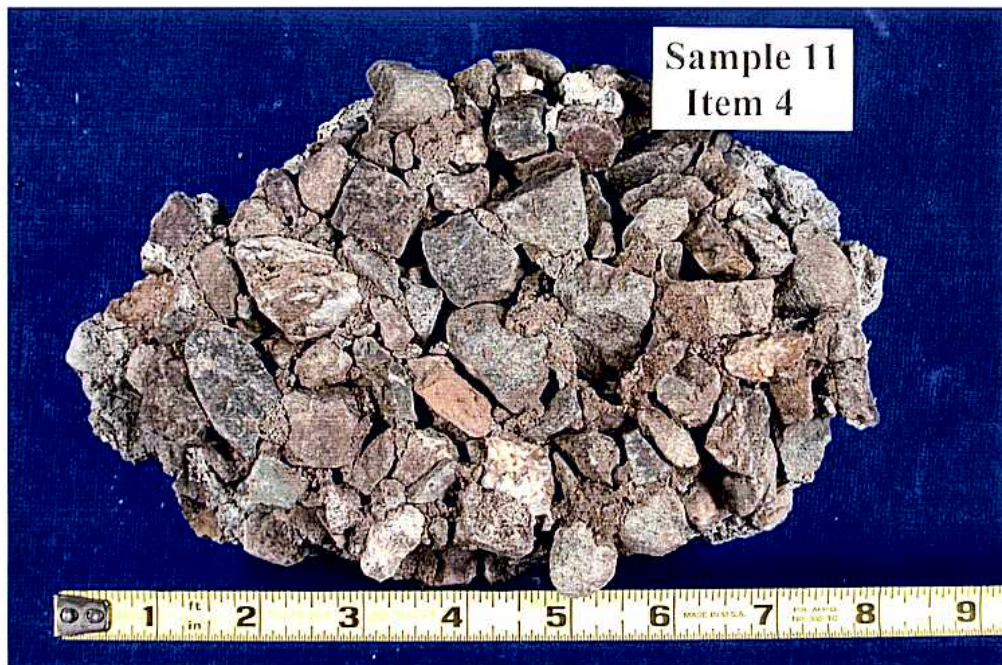


Fig. 36 Bottom surface of Sample 11 Item 4, as received.



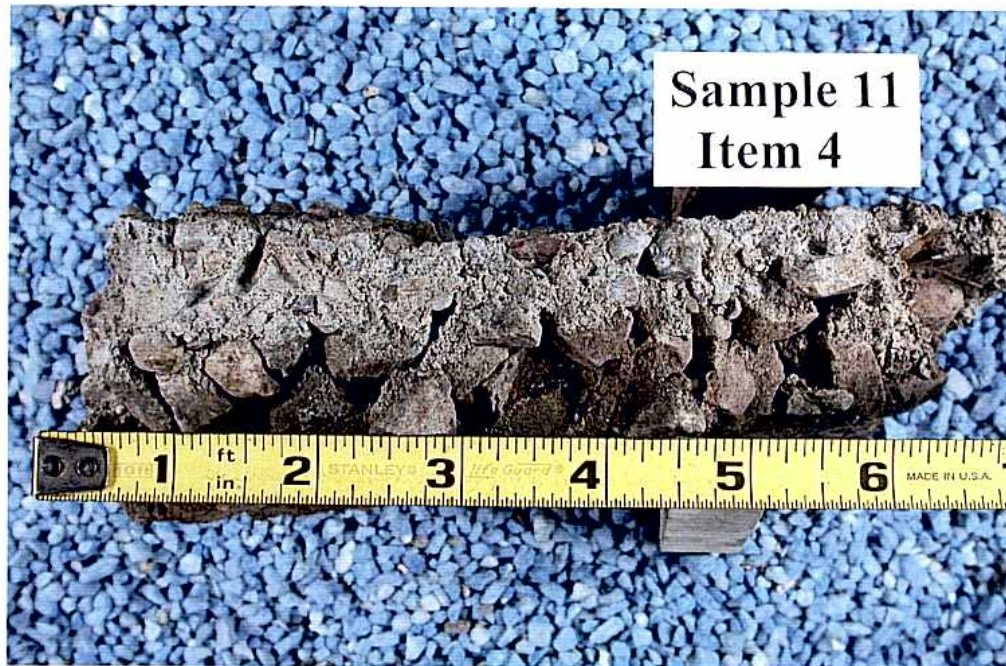


Fig. 37 Side view of Sample 11 Item 4, as received.

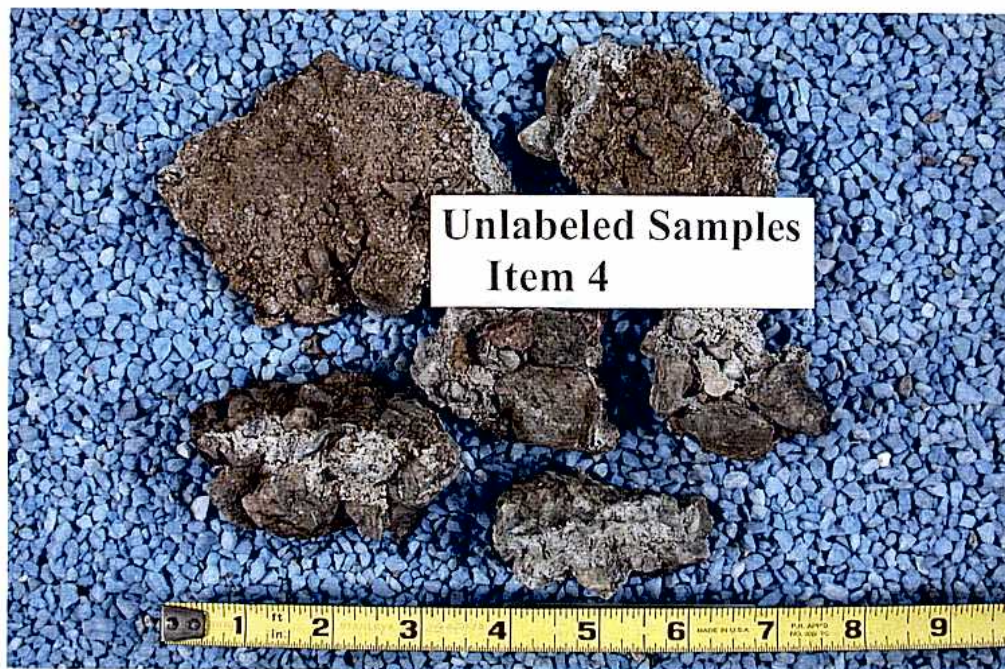
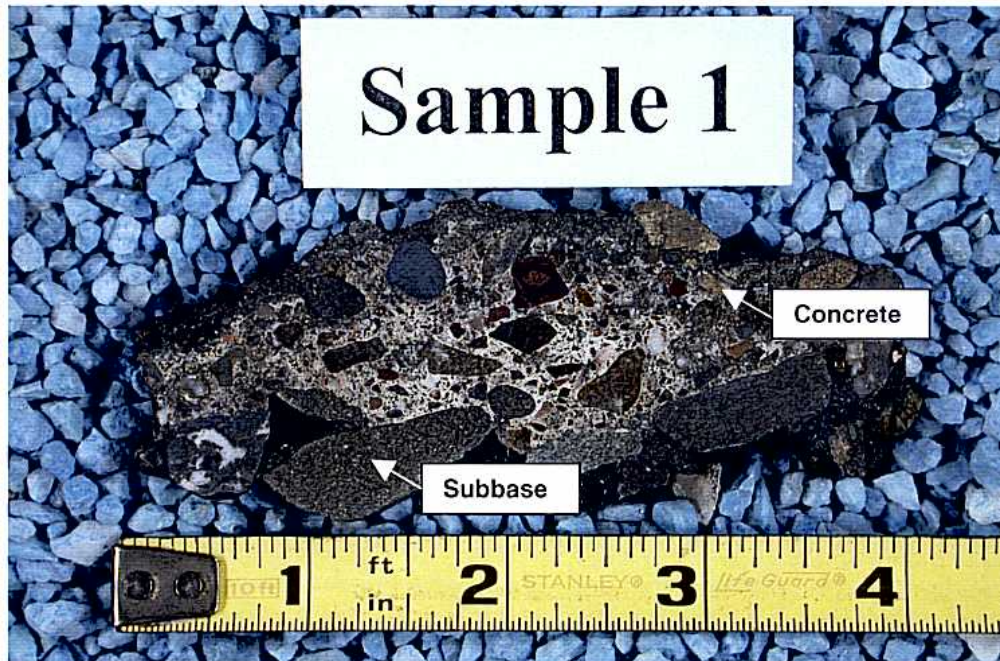


Fig. 38 Several pieces of unlabeled concrete from Item 4, as received.



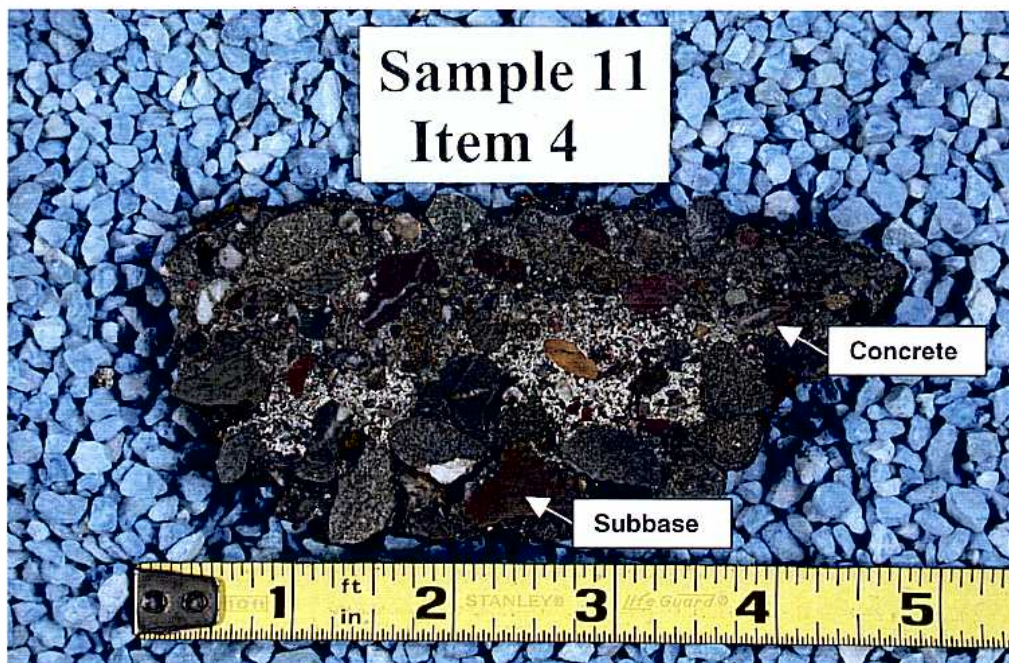


**Fig. 39** Cut and lapped cross section of a representative portion of Sample 1 showing the general appearance and location of the concrete, and the rock subbase.



**Fig. 40** Cut and lapped cross section of a representative portion of Sample 2 showing the general appearance and location of the concrete, and the rock subbase.





**Fig. 41** Cut and lapped cross section of a representative portion of Sample 11 Item 4 showing the general appearance and location of the concrete, and the rock subbase.