

Station Information **Richmond, CA - [Data Disclaimer](#)**

Richmond, CA: [Data Inventory](#)

Tide / Water Data
Station ID: **9414863**

[Page Help](#)

Tide Predictions

Meteorological Observations

NOAA/NOS/CO-OPS
Wind Speed/Gusts/Dir
9414863 Richmond, CA
from 2004/07/11 - 2004/07/11

Nearby Stations

- [San Francisco, CA](#)
- [Oakland Middle Har](#)
- [Alameda, CA](#)
- [ALAMEDA, HIGH STREE](#)
- [Port Chicago, CA](#)
- [Redwood City, CA](#)
- [Point Reyes, CA](#)
- [Monterey, CA](#)
- [Arena Cove, CA](#)

Current Data

Meteorological Observations

Conductivity

PORTS

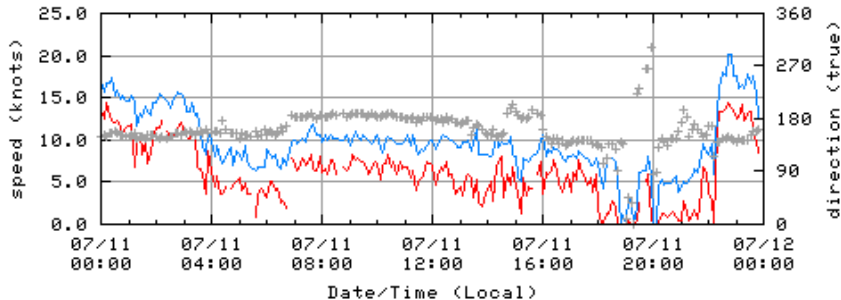
Operational Forecast System

Bench Mark Sheets

Datums

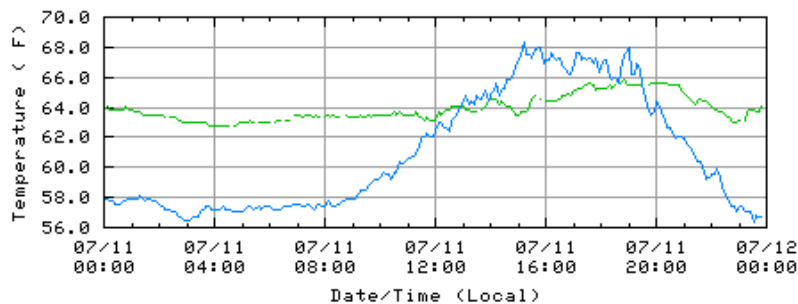
Harmonic Constituents

Sea Level Trends



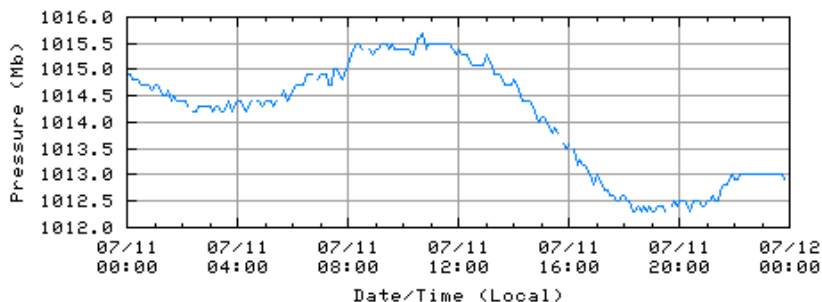
speed — gusts — direction +

NOAA/NOS/CO-OPS
Air/Water Temperature Plot
9414863 Richmond, CA
from 2004/07/11 - 2004/07/11



water temp. — air temp. —

NOAA/NOS/CO-OPS
Barometric Pressure Plot
9414863 Richmond, CA
from 2004/07/11 - 2004/07/11



barometric pressure —

Begin Date:

Jul 11 2004

End Date:

Interval:

Six minute

Data Units:

- Fahrenheit - knots
- Celsius - m/sec

Time Zone:

- Local
- GMT

[Click here for a larger plot](#)

[Click here for a larger plot](#)

[Click here for a larger plot](#)

Jul 11 2004 

LST

[View Plot](#) [View Data](#) [Reset](#)

[Disclaimers](#)
11/23/2005

[Contact Us](#)

[Privacy Policy](#)

[home](#) | [products](#) | [programs](#) | [partnerships](#) | [education](#) | [help](#)
[About CO-OPS](#) [For CO-OPS Employees Only](#) [Revised:](#)

NOAA / National Ocean
Service